

nano tech
International Nanotechnology Exhibition & Conference

The 23rd International Nanotechnology Exhibition & Conference

EXHIBITOR PROSPECTUS

www.nanotechexpo.jp

ORGANIZER nano tech executive committee / JTB Communication Design, Inc.

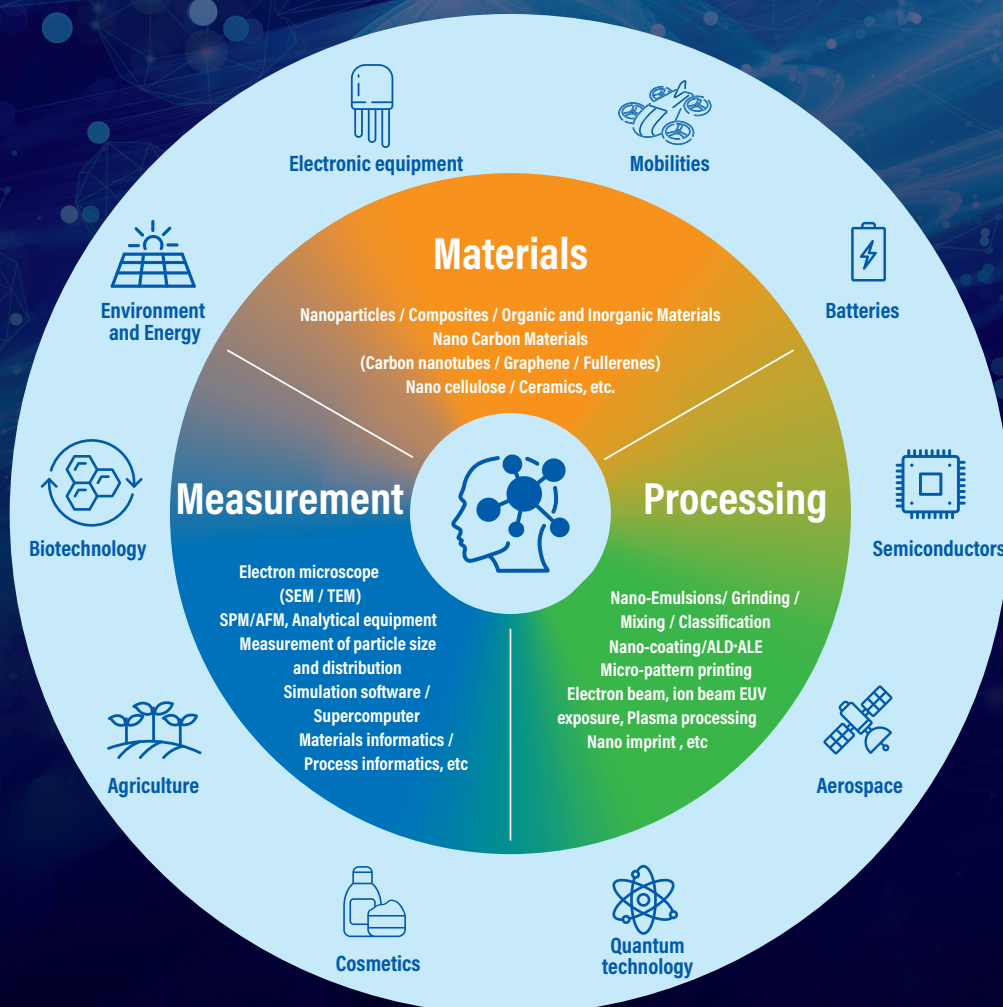
Date

JAN 31 – FEB 2, 2024

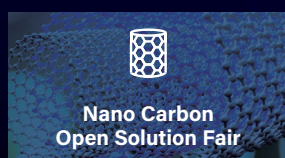
Venue

East Halls, Tokyo Big Sight

Seeds become business. Co-creating Innovation.

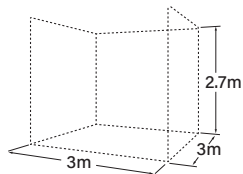


Organizer Special Exhibition



Exhibition Fees

■ Raw Space Only (booth not included)



*The below exhibition fee including as follows;
 -Exhibitor information page on the official website
 -Viewer information for files or videos on the exhibitor information page.
 -Business Matching System
 For more details, please see the Terms and Condition.

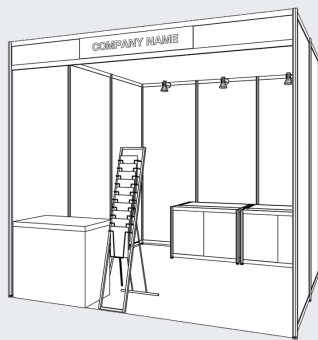
*Side panels are provided when the space borders on neighboring booths.
 Corner booth spaces include only one side wall.

*The below exhibition fee does NOT cover costs for booths' installation, dismantling, decoration, cleaning, or waste disposal, nor charges for electricity/water supply and drainage or internet fees.

Company **¥374,000 (tax included)/9m²**

Public Organizations / Overseas Pavillions / University Labs Area **¥198,000 (tax included) /9m²**

■ (Optional) Package Booth



Display Cabinet with Sliding Door x 2
 Reception Counter
 Fascia Board 3m
 Name Plate *Gothic Font
 Folding Chair x 2
 Brochure Stand
 Name Card Box
 Arm Spot Light (100W) x 3
 Carpet
 Electric Supply 1kW
 Power Socket
 Trash Can
 *including power consumption of lighting equipment (300W)

Plans start from: ¥143,000 (tax included)~

Applications should be sent to the official construction company.

Exhibitor Presentation Fees

■ Seeds & Needs Seminar

Seminar area capacity: 100 seats

Fee: 1 session = 45 minutes

¥165,000 (tax included)

Fee: 1 session = 30 minutes

¥110,000 (tax included)

■ Main Theater Presentation

Presentation area capacity: 120 seats

Fee: 1 session = 45 minutes

¥275,000 (tax included)

- **Fees include:**
- Screen and projector for computer-based presentations
 - Audio equipment (2 microphones, speaker)

■ **Optional:** Simultaneous interpretation **¥132,000 (tax included)**

Exhibitor Support Program

■ Logo on Official Exhibition Website

¥440,000 (tax included)

■ On-site Advertising

start from: ¥110,000 (tax included)~



◀ Click here for other Support Program Menus

How to Apply / Schedule

■ How to Apply

Simply complete the Online Application Form
 (<https://www.nanotechexpo.jp/main/>)

1 Deadline for application: September 29, 2023

2 How to pay: The Secretariat will email you an invoice after your application is received.
 Exhibition fees must be remitted by the date specified in the invoice without fail.
 Failure to pay exhibition fees by the deadline may result in your application being declined.

3 Cancellations: As a rule, applications cannot be cancelled.
 Cancellations are accepted only when the Secretariat deems it unavoidable.
 In such cases, penalties may be incurred according to the date the written notice of the cancellation is received.



Online Application Form

September 29, 2023	Late Oct. to early Nov.	October 31, 2023	January 29-30, 2024	January 31-February 2, 2024
Final deadline for Exhibit Application	The Exhibitor Manual and floorplan will be announced.	Deadline for Payment	Move-in and Set up (2 days)	Exhibition Open (3 days)

* Move-out begins on Feb.2 (Fri.) after the show is closed.

From Aug.1 to Sep.30,
 50% of the invoiced amount
 (including taxes)

From Oct.1 100% of the invoiced amount
 (including taxes)

Contact: Secretariat of nano tech executive committee, c/o JTB Communication Design, Inc.
 Celestine Shiba Mitsui Building, 3-23-1, Shiba, Minato-ku, Tokyo, Japan 105-8335
 Phone: +81-3-5657-0760 Fax: +81-3-5657-0645 E-mail: nanotech@jtbcom.co.jp

Jtb
 Communication
 Design